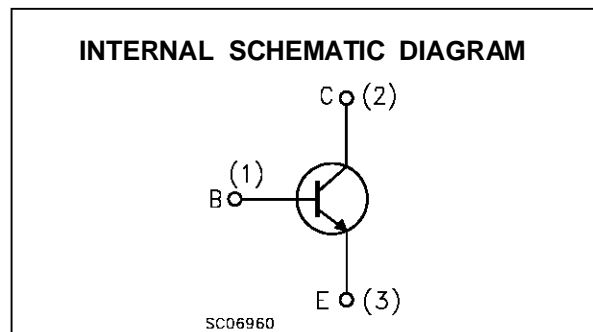
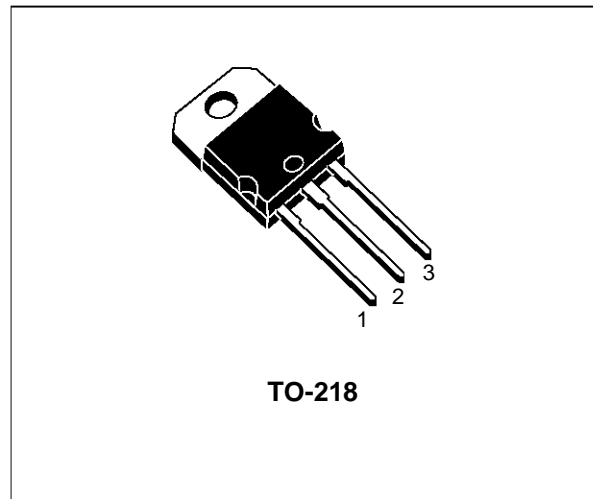


SILICON NPN SWITCHING TRANSISTOR

- SGS-THOMSON PREFERRED SALESTYPE
- FAST SWITCHING TIMES
- LOW SWITCHING LOSSES
- VERY LOW SATURATION VOLTAGE AND HIGH GAIN



ABSOLUTE MAXIMUM RATINGS

Symbol	Parameter	Value	Unit
V_{CEV}	Collector-emitter Voltage ($V_{BE} = -1.5V$)	160	V
V_{CEO}	Collector-emitter Voltage ($I_B = 0$)	90	V
V_{EBO}	Emitter-Base Voltage ($I_C = 0$)	7	V
I_C	Collector Current	25	A
I_{CM}	Collector Peak Current	45	A
I_B	Base Current	6	A
I_{BM}	Base Peak Current	9	A
P_{Base}	Reverse Bias Base Power Dissipation (B.E. junction in avalanche)	1	W
P_{tot}	Total Power Dissipation at $T_{case} < 25\text{ }^\circ\text{C}$	125	W
T_{stg}	Storage Temperature	-65 to 175	$^\circ\text{C}$
T_j	Max Operating Junction Temperature	175	$^\circ\text{C}$

THERMAL DATA

R _{thj-case}	Thermal Resistance Junction-case	Max	1	°C/W
-----------------------	----------------------------------	-----	---	------

ELECTRICAL CHARACTERISTICS (T_{case} = 25 °C unless otherwise specified)

Symbol	Parameter	Test Conditions	Min.	Typ.	Max.	Unit
I _{CER}	Collector Cut-off Current (R _{BE} = 10Ω)	V _{CE} = V _{CEV} V _{CE} = V _{CEV} T _c = 100°C			1 5	mA mA
I _{CEV}	Collector Cut-off Current	V _{CE} = V _{CEV} V _{BE} = -1.5V V _{CE} = V _{CEV} V _{BE} = -1.5V T _C =100°C			1 5	mA mA
I _{EBO}	Emitter Cut-off Current (I _c = 0)	V _{EB} = 5 V			1	mA
V _{CEO(sus)*}	Collector-Emitter Sustaining Voltage	I _c = 0.2A L = 25 mH	90			V
V _{EBO}	Emitter-base Voltage (I _c = 0)	I _E = 50 mA	7			V
V _{CE(sat)*}	Collector-Emitter Saturation Voltage	I _c = 7.5A I _B = 0.375A I _c = 15A I _B = 1.5A I _c = 7.5A I _B = 0.375A T _j = 100°C I _c = 15A I _B = 1.5A T _j = 100°C		0.5 0.65 0.5 0.8	0.8 0.9 0.9 1.5	V V V V
V _{BE(sat)*}	Base-Emitter Saturation Voltage	I _c = 15A I _B = 1.5A I _c = 15A I _B = 1.5A T _j = 100°C		1.4 1.45	1.7 1.8	V V
di _c /dt*	Rated of Rise of on-state Collector Current	V _{CC} = 72V R _C = 0 I _{B1} = 2.25A T _j = 25°C T _j = 100°C	35 30	50 45		A/μs A/μs
V _{CE(2μs)}	Collector Emitter Dynamic Voltage	V _{CC} = 72V R _C = 4.8Ω I _{B1} = 1.5A T _j = 25°C T _j = 100°C		1.7 2	2.5 4	V V
V _{CE(4μs)}	Collector Emitter Dynamic Voltage	V _{CC} = 72V R _C = 4.8Ω I _{B1} = 1.5A T _j = 25°C T _j = 100°C		1 1.5	2 3	V V

* Pulsed: Pulse duration = 300 μs, duty cycle < 2 %

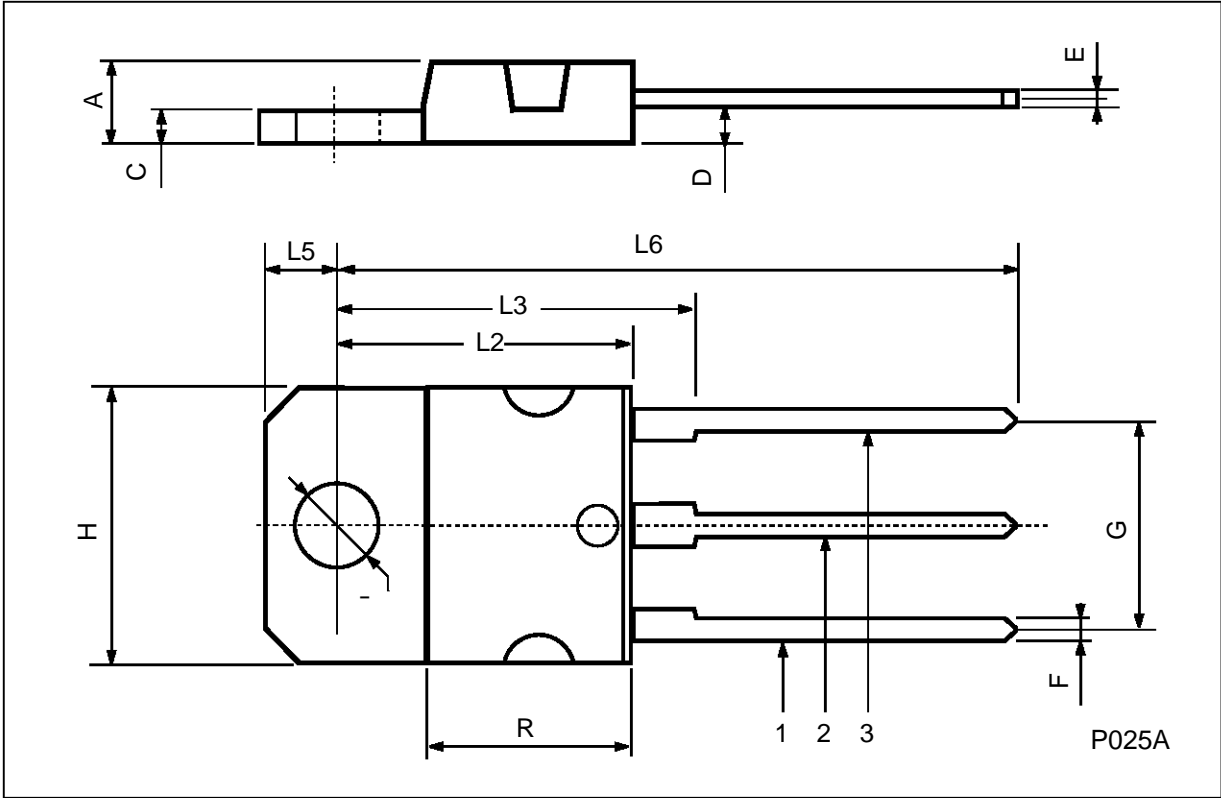
ELECTRICAL CHARACTERISTICS (continued)

Symbol	Parameter	Test Conditions	Min.	Typ.	Max.	Unit
	RESISTIVE LOAD					
t_r	Rise Time	$V_{CC} = 72V$ $I_C = 20A$		0.55	1.1	μs
t_s	Storage Time	$V_{BB} = -5V$ $I_{B1} = 2.5A$		0.55	1	μs
t_f	Fall Time	$R_{B2} = 1\Omega$ $T_p = 30\mu s$		0.12	0.25	μs
	INDUCTIVE LOAD					
t_s	Storage Time	$V_{CC} = 72V$ $V_{clamp} = 90V$		0.75	1.2	μs
t_f	Fall Time	$I_C = 15A$ $I_B = 1.5A$		0.09	0.2	μs
t_t	Tail Time in Turn-on	$V_{BB} = -5V$ $R_{B2} = 1.7\Omega$		0.03	0.05	μs
t_c	Crossover Time	$L_C = 0.25mH$		0.14	0.3	μs
t_s	Storage Time	$V_{CC} = 72V$ $V_{clamp} = 90V$		0.95	1.7	μs
t_f	Fall Time	$I_C = 15A$ $I_B = 1.5A$		0.15	0.3	μs
t_t	Tail Time in Turn-on	$V_{BB} = -5V$ $R_{B2} = 1.7\Omega$		0.06	0.1	μs
t_c	Crossover Time	$L_C = 0.25mH$ $T_j = 100^\circ C$		0.3	0.5	μs
t_s	Storage Time	$V_{CC} = 72V$ $V_{clamp} = 90V$		1.4		μs
t_f	Fall Time	$I_C = 15A$ $I_B = 1.5A$		0.7		μs
t_t	Tail Time in Turn-on	$V_{BB} = 0$ $R_{B2} = 3.9\Omega$		0.22		μs
		$L_C = 0.25mH$				
t_s	Storage Time	$V_{CC} = 72V$ $V_{clamp} = 90V$		1.85		μs
t_f	Fall Time	$I_C = 15A$ $I_B = 1.5A$		1		μs
t_t	Tail Time in Turn-on	$V_{BB} = 0$ $R_{B2} = 3.9\Omega$		0.44		μs
		$L_C = 0.25mH$ $T_j = 100^\circ C$				

* Pulsed test $t_p = 300 \mu s$, duty cycle < 2 %

TO-218 (SOT-93) MECHANICAL DATA

DIM.	mm			inch		
	MIN.	TYP.	MAX.	MIN.	TYP.	MAX.
A	4.7		4.9	0.185		0.193
C	1.17		1.37	0.046		0.054
D		2.5			0.098	
E	0.5		0.78	0.019		0.030
F	1.1		1.3	0.043		0.051
G	10.8		11.1	0.425		0.437
H	14.7		15.2	0.578		0.598
L2	-		16.2	-		0.637
L3		18			0.708	
L5	3.95		4.15	0.155		0.163
L6		31			1.220	
R	-		12.2	-		0.480
Ø	4		4.1	0.157		0.161



Information furnished is believed to be accurate and reliable. However, SGS-THOMSON Microelectronics assumes no responsibility for the consequences of use of such information nor for any infringement of patents or other rights of third parties which may result from its use. No license is granted by implication or otherwise under any patent or patent rights of SGS-THOMSON Microelectronics. Specifications mentioned in this publication are subject to change without notice. This publication supersedes and replaces all information previously supplied. SGS-THOMSON Microelectronics products are not authorized for use as critical components in life support devices or systems without express written approval of SGS-THOMSON Microelectronics.

© 1995 SGS-THOMSON Microelectronics - All Rights Reserved

SGS-THOMSON Microelectronics GROUP OF COMPANIES

Australia - Brazil - France - Germany - Hong Kong - Italy - Japan - Korea - Malaysia - Malta - Morocco - The Netherlands -
Singapore - Spain - Sweden - Switzerland - Taiwan - Thailand - United Kingdom - U.S.A

...